

Nature in Your Neighborhood Bingo

Anyone can find, befriend, and protect nature as an ally for wildlife. Whether you live near a lush forest or in a bustling city, nature is all around you—you just have to look for it.

To practice finding nature around you, head outside to a space near your home, neighborhood, or a park and see if you can find wildlife that match the squares below.

Once you do, mark off your square. **The first person to connect a full a row is the winner!**

New growth	Something orange	A chirping sound	Something that hums	Something that flutters
Two kinds of bark	Something that slithers	3 kinds of birds	An animal that runs	Two flying insects
An underground habitat	A worm	Free space	Something smelly	An animal that jumps
Something blue	2 types of flowers	A spiderweb	Animal tracks	Something prickly
A berry or seed	A mammal	Something smooth	A feather	An amphibian



Nature in Your Neighborhood Bingo

Anyone can find, befriend, and protect nature as an ally for wildlife. Whether you live near a lush forest or in a bustling city, nature is all around you—you just have to look for it.

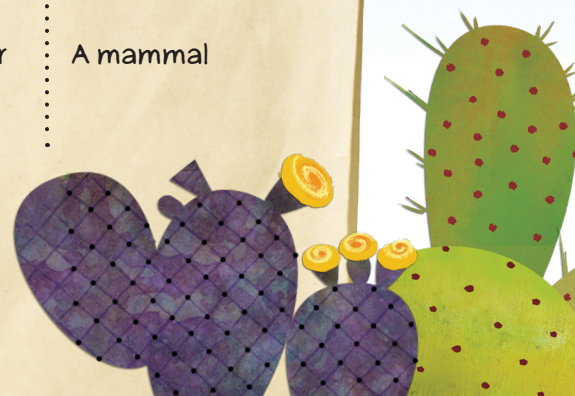
To practice finding nature around you, head outside to a space near your home, neighborhood, or a park and see if you can find wildlife that match the squares below.

Once you do, mark off your square. **The first person to connect a full a row is the winner!**

Something prickly	Something orange	A chirping sound	Something that hums	A worm
Two kinds of bark	An underground habitat	3 kinds of birds	An animal that runs	Two flying insects
An amphibian	Something that flutters	Free space	Something smelly	Something blue
2 types of flowers	Animal tracks	A spiderweb	Something that slithers	A berry or seed
An animal that jumps	New growth	Something smooth	A feather	A mammal



San Diego Zoo
Wildlife Explorers



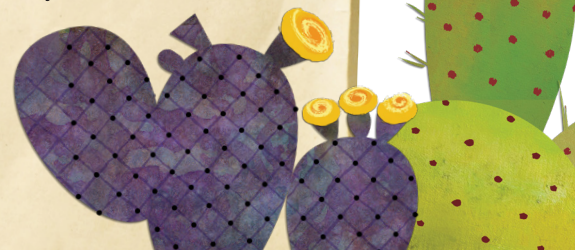
Nature in Your Neighborhood Bingo

Anyone can find, befriend, and protect nature as an ally for wildlife. Whether you live near a lush forest or in a bustling city, nature is all around you—you just have to look for it.

To practice finding nature around you, head outside to a space near your home, neighborhood, or a park and see if you can find wildlife that match the squares below.

Once you do, mark off your square. **The first person to connect a full a row is the winner!**

Something smooth	A worm	A chirping sound	A feather	An animal that jumps
Two kinds of bark	An underground habitat	Something that hums	An animal that runs	Something prickly
A berry or seed	Two flying insects	Free space	3 kinds of birds	Something that slithers
Something orange	Animal tracks	A spiderweb	Something blue	2 types of flowers
Something that flutters	New growth	An amphibian	Something smelly	A mammal



Nature in Your Neighborhood Bingo

Anyone can find, befriend, and protect nature as an ally for wildlife. Whether you live near a lush forest or in a bustling city, nature is all around you—you just have to look for it.

To practice finding nature around you, head outside to a space near your home, neighborhood, or a park and see if you can find wildlife that match the squares below.

Once you do, mark off your square. **The first person to connect a full a row is the winner!**

Something that slithers	A worm	Something smelly	A feather	New growth
2 types of flowers	3 kinds of birds	Something that hums	Animal tracks	Something smooth
Something that flutters	Two flying insects	Free space	Something orange	An amphibian
An animal that jumps	A mammal	A spiderweb	An underground habitat	A chirping sound
Something prickly	An animal that runs	A berry or seed	Two kinds of bark	Something blue



San Diego Zoo
Wildlife Explorers



Nature in Your Neighborhood Bingo

Anyone can find, befriend, and protect nature as an ally for wildlife. Whether you live near a lush forest or in a bustling city, nature is all around you—you just have to look for it.

To practice finding nature around you, head outside to a space near your home, neighborhood, or a park and see if you can find wildlife that match the squares below.

Once you do, mark off your square. **The first person to connect a full a row is the winner!**

A chirping sound	A mammal	Two flying insects	A berry or seed	New growth
Two kinds of bark	3 kinds of birds	Something smelly	Animal tracks	An amphibian
Something that flutters	Something smooth	Free space	A spiderweb	Something prickly
Something orange	An animal that runs	2 types of flowers	An underground habitat	An animal that jumps
Something that slithers	A worm	A feather	Something that hums	Something blue



Nature in Your Neighborhood Bingo

Anyone can find, befriend, and protect nature as an ally for wildlife. Whether you live near a lush forest or in a bustling city, nature is all around you—you just have to look for it.

To practice finding nature around you, head outside to a space near your home, neighborhood, or a park and see if you can find wildlife that match the squares below.

Once you do, mark off your square. **The first person to connect a full a row is the winner!**

A spiderweb	A mammal	Two flying insects	Something that hums	An animal that runs
2 types of flowers	Something that slithers	A feather	Two kinds of bark	An amphibian
Something smelly	A berry or seed	Free space	Something orange	Something prickly
3 kinds of birds	Animal tracks	Something smooth	Something that flutters	An animal that jumps
Something blue	A worm	New growth	A chirping sound	An underground habitat

